

N24 200

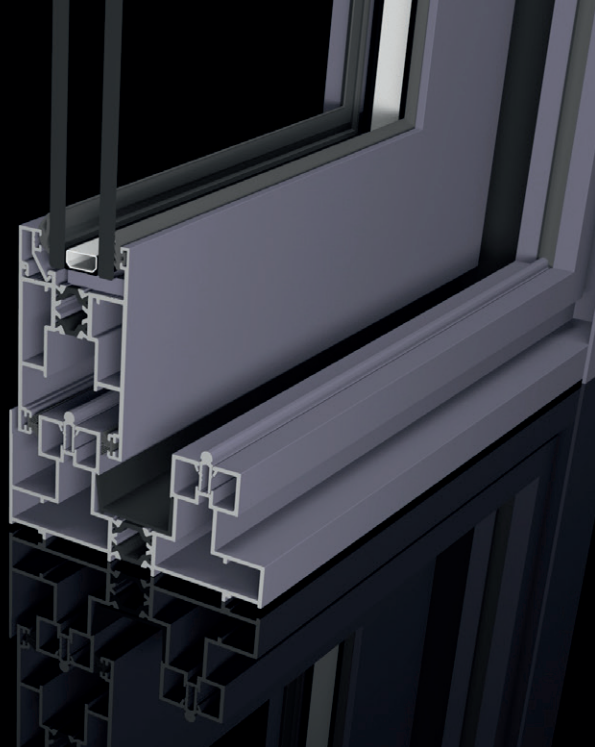
**SISTEMA DE CORRER PERIMETRAL
COM RUTURA DE PONTE TÉRMICA**

PERIMETRAL SLIDING SYSTEM WITH THERMAL BREAK

ARQUITETURA: JOSÉ ADRIÃO ARQUITETOS

FOTOGRAFIA: NUNO ALMENDRA





Sistema de correr perimetral com rutura de ponte térmica, linhas retas, aros fixos de 118mm de profundidade, com opção em tri-rail e quadri-rail, e aros móveis de 81,7mm de vista. Sistema termicamente melhorado pela inclusão de poliamidas, indo de encontro às necessidades atuais de qualidade com performances elevadas e de fácil manuseamento.

Com múltiplas soluções construtivas, possibilita a execução de caixilhos de grandes dimensões e vãos bicolores. Permite a execução de vãos de correr tradicionais e folhas de correr eleváveis, mediante um acessório próprio que facilita a manobra e deslizamento da folha.

Com o perfil N24 263, este sistema permite a fabricação de folhas com bite, aumentando-se a facilidade de fabricação dos caixilhos. O perfil N24 263 permite, também, a fabricação de folhas de correr tradicionais e folhas de correr eleváveis no mesmo caixilho.

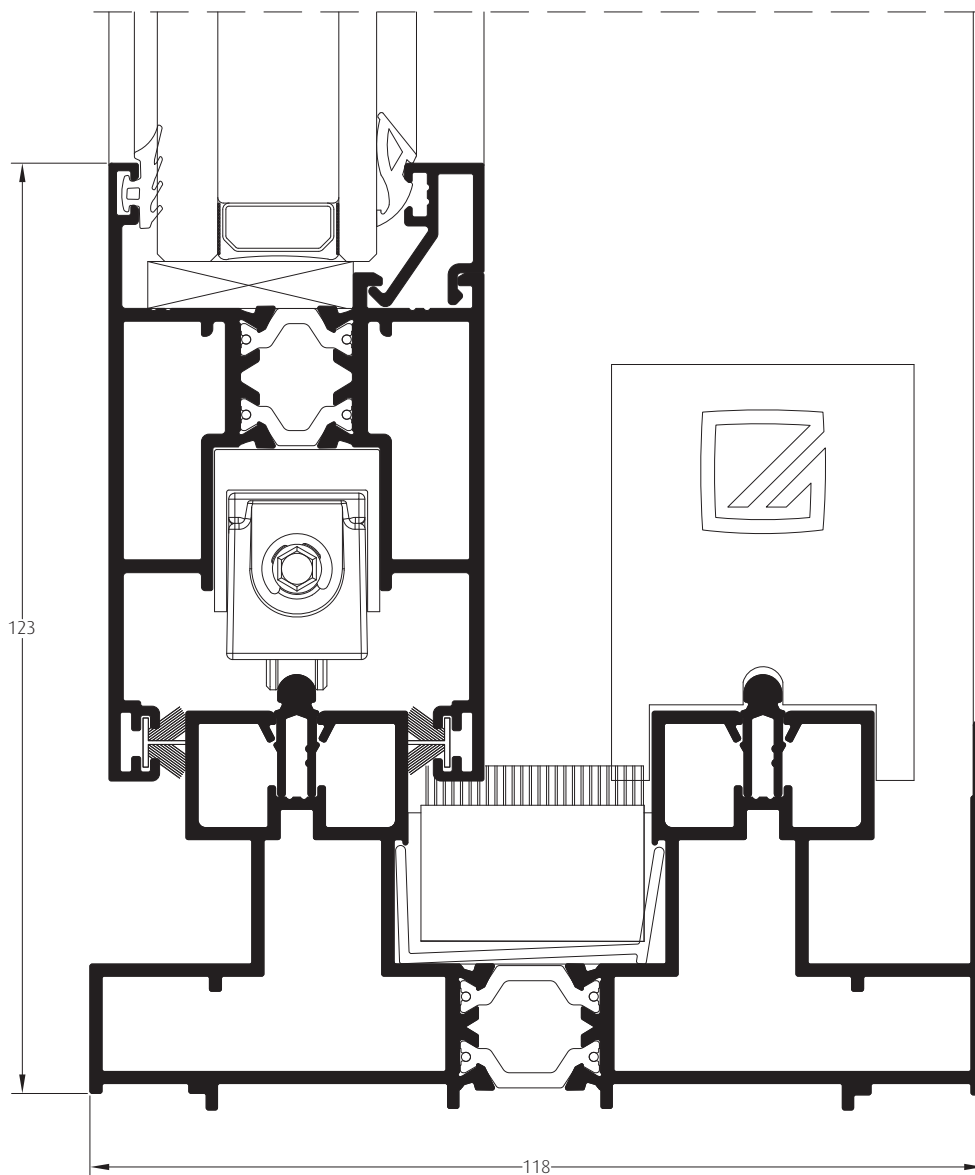
Perimetral sliding system with thermal break assembly, straight lines, fixed frames of 118mm depth, with 3-rail and 4-rail options, and sashes with a view of 81,7mm. Thermally improved system through the inclusion of polyamides, meeting the current quality requirements, with high performances and easy handling. With multiple constructive solutions, it enables the execution of large dimensions sashes and bicolour finishing. It allows traditional sliding openings and lift-slide sashes through a specific accessory that makes it easier to manoeuvre and slide. With N24 263 profile, this system allows the manufacturing of sashes with glazing beads, increasing the frames' ease of manufacturing. The N24 263 profile allows, also, the manufacturing of traditional sliding openings and lift-slide sashes in the same frame.

Fixed frame: 118 mm (bi-rail option)
Glazing: up to 36mm

Aro fixo: 118mm (opção bi-rail)
Vidro: até 36mm

N24 200 COM BITE

N24 200 WITH GLAZING BEAD

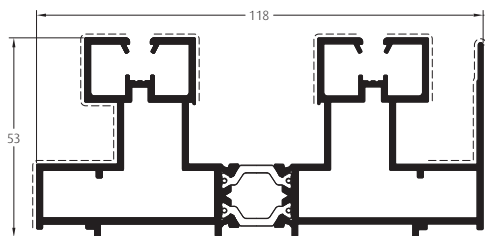


[escala scale 1:1]

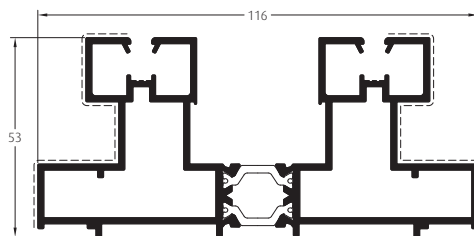
**FACILIDADE DE FABRICAÇÃO COM MAIOR
GAMA DE SOLUÇÕES NO MESMO CAIXILHO**

EASE OF FABRICATION WITH A WIDER RANGE OF SOLUTIONS IN THE SAME FRAME

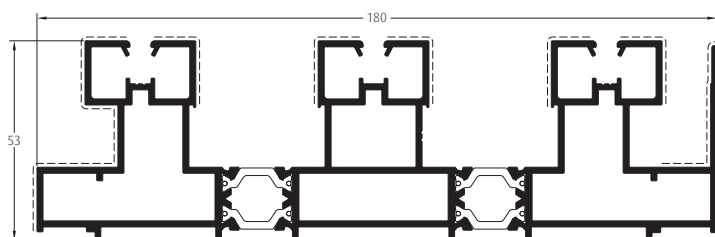
AROS FIXOS | OUTER FRAMES



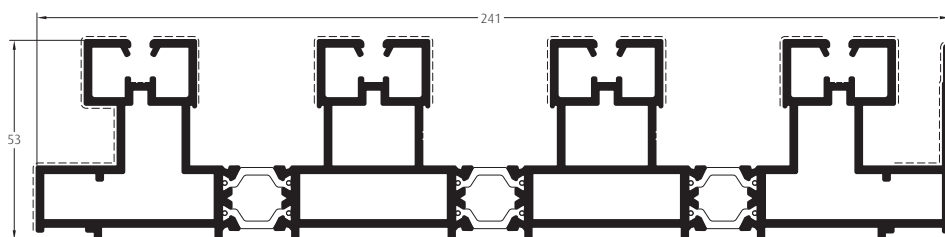
N24 203



N24 299

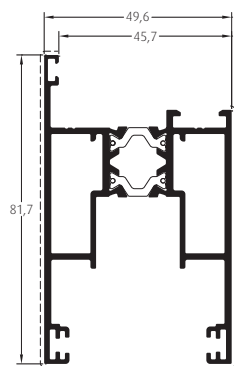


N24 204



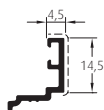
N24 205

ARO MÓVEL PERIMETRAL | PERIMETRAL VENT PROFILE

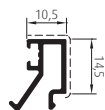


N24 263

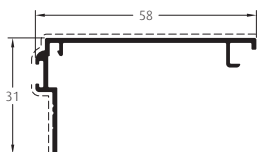
PERFIS COMPLEMENTARES | ADDITIONAL PROFILES



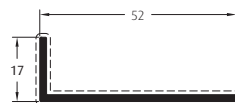
N24 251
(bite/glazing bead)



N24 252
(bite/glazing bead)



N24 293
(capa central/central cover profile)



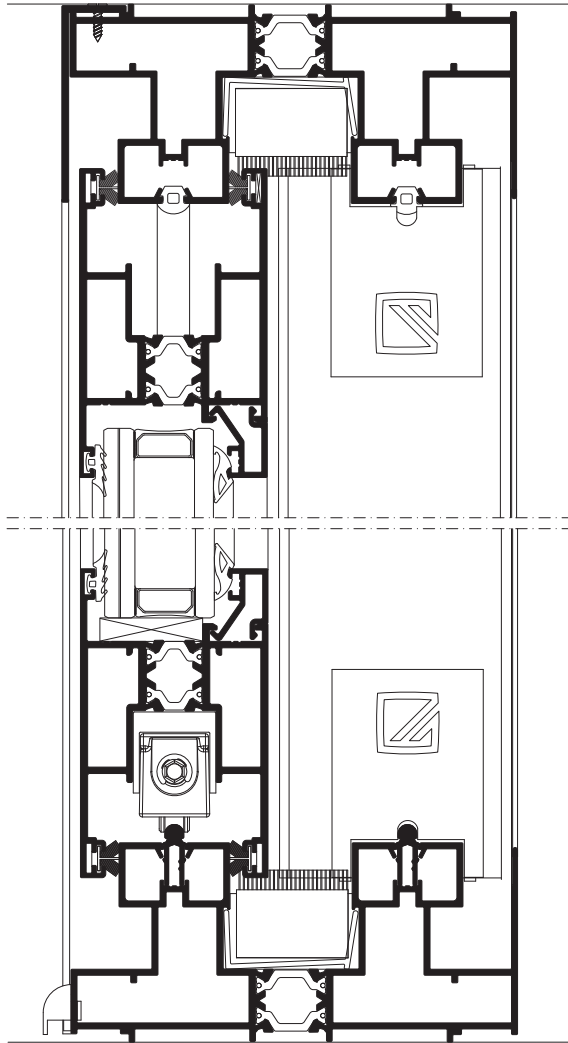
N30 222
(perfil de remate/end profile)



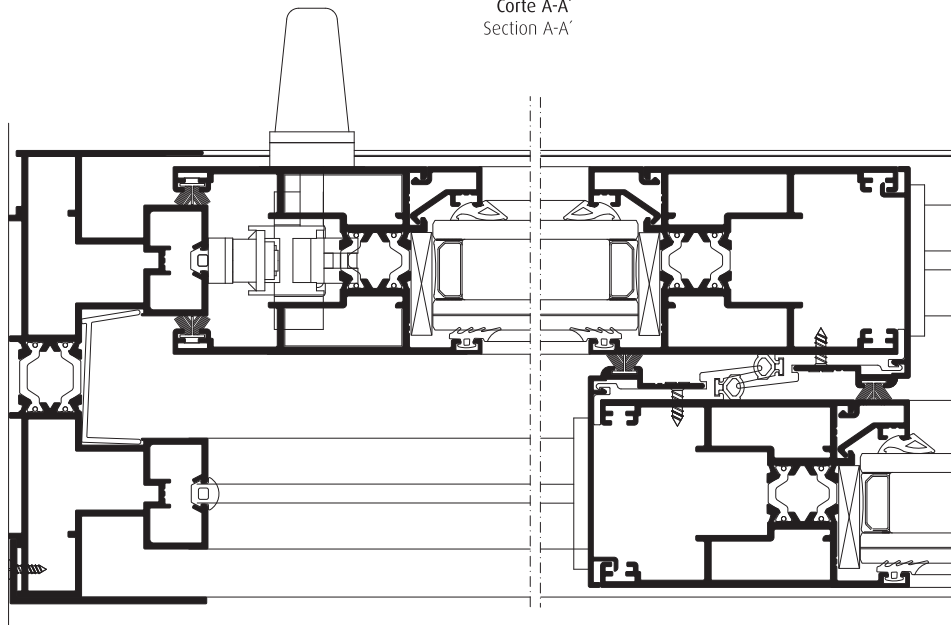
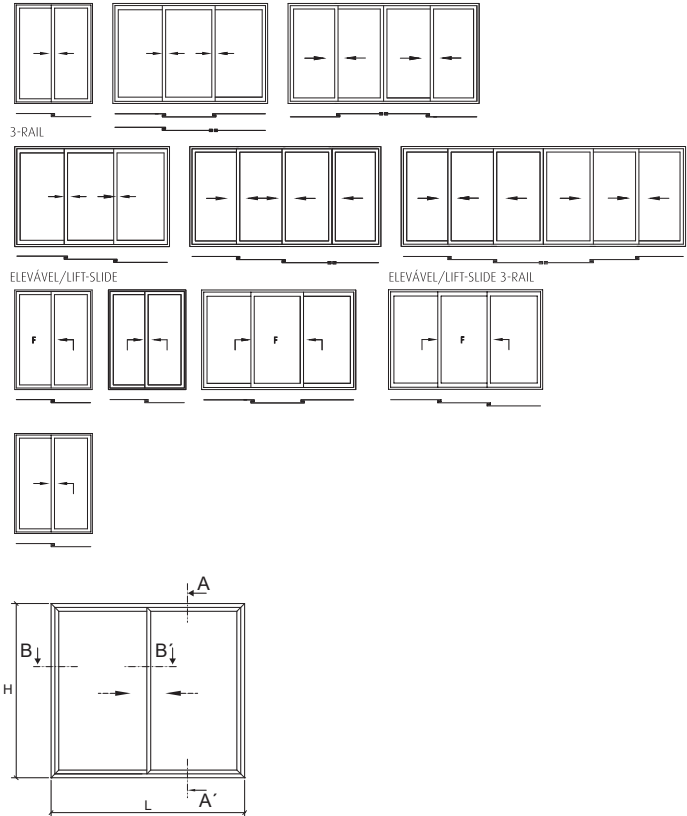
N26 094
(carril/rail)

MONTAGENS E TIPOLOGIAS

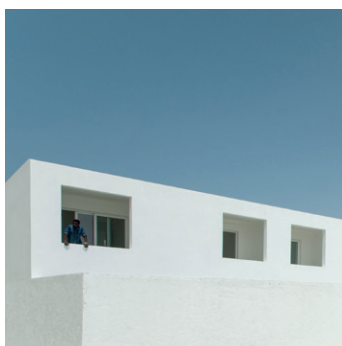
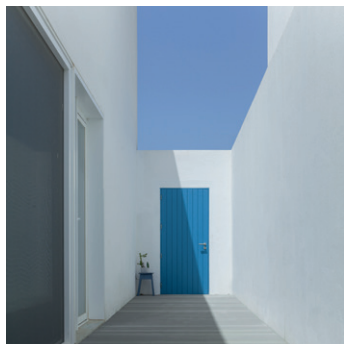
ASSEMBLIES AND TYPOLOGIES



Corte A-A'
Section A-A'



Corte B-B'
Section B-B' [sem escala without scale]



OBRA: PRAIA DO ESTORIL, CABO-VERDE
ARQUITETURA: JOSÉ ADRIÃO ARQUITETOS
FOTOGRAFIA: NUNO ALMENDRA

A Navarra - Extrusão de Alumínio, S.A. reserva-se no direito de proceder sem aviso prévio a alterações em todo ou parte do conteúdo apresentado, invalidando todas as versões anteriores.

Navarra - Extrusão de Alumínio, S.A. reserves the right to make unannounced changes to all or part of the content presented, invalidating all previous versions.

As imagens contidas nesta peça são meramente exemplificativas.

The images contained in this brochure are merely illustrative.

EDIFÍCIO SEDE | HEAD OFFICE
CENTRO DE INVESTIGAÇÃO | RESEARCH CENTRE
SHOWROOM BRAGA | BRAGA SHOWROOM

Navarra - Extrusão de Alumínio, S.A.
Avenida Doutor Domingos Soares, nº 18
4710-670 Braga

COORDENADAS GPS | GPS COORDINATES

41° 36' 10.582" N
8° 22' 52.554" W

ENDEREÇO POSTAL | POSTCODE

Navarra - Extrusão de Alumínio, S.A.
Apartado 2476
4701-971 BRAGA

t. + 351 253 603 520
f. + 351 253 677 005
geral@navarraaluminio.com
comercial@navarraaluminio.com
export@navarraaluminium.com

SHOWROOM LISBOA | LISBON SHOWROOM

Parque das Nações
Alameda dos Oceanos
Edifício Mar do Oriente, n.º63 fração 0.1
1900-137 Lisboa

t. + 351 218 965 032
showroomlisboa@navarraaluminio.com

COORDENADAS GPS | GPS LOCATION

38° 46' 17.4" N
9° 05' 44.4" W

www.navarraaluminio.com
www.navarrabim.com

Descubra a nossa APP navarra® AR
Discover our Navarra® AR APP



 **navarra®**
a marca do alumínio
the aluminium brand